

DC MOTOR/WITH ENCODER/BLDC

DC PLANETARY GEAR MOTOR

**DORYOKU
TECHNICAL CORP.**

Dual Bearings Design

Dual roller bearings design and heat treatment of gear or shaft to increase the strength of gearbox or thicken the gear to let bearing capacity bigger. We do our best to meet customers' critical request.

Planetary Gearbox Structure

Planetary geared motor is highly reliable. The efficiency of 1 stage is about 90%, 2 stages is about 81%, and so forth. The structure makes it ideal for many applications – from industrial automation to medical.

- High Efficiency
- Wide Range Of Ratio
- Huge Torque Capability

FEATURES :

6VDC, 12VDC, 24VDC, 36VDC.

1RPM - 5000 RPM.

High torque DC gear motor, DC brushed motor could be selected and combine.

Optical encoder, Magnetic encoder, encoder + brake Option.

Performance Curves of Torque, Current, Speed will be attached as sample request.

Data Sheet

We could offer a datasheet of straight speed-torque curve, with starting torque, speeds and current to let you know the motor's peak efficiency with operating torque.

ODM, OEM Welcome

Customized design welcome. DORYOKU can provide special shaft or flange version upon request. Gearbox design, Shaft and Flange shape can be made according to your requirement.

DORYOKU TECH. CORP.
DC Planetary gear motor
Made in Taiwan

C O N T E N T S

DIA18	Micro Planetary (P18)	I - 1
DIA22	Mini Tube Motor (P22B)	I - 2
DIA22-L42	Planetary Motor (P22LB)	I - 3
DIA26	Planetary Low Noise Motor (P26)	I - 4
DIA26	Strong Tube Motor (P26-1)	I - 5
DIA32	Low Noise Planet Motor (P32)	I - 6
DIA37	Low Noise Planet Motor (P35)	I - 7
DIA37	Quiet Planet Motor (P35-1)	I - 8
DIA37	Strong Vr. Planet Motor (P35-2)	I - 9
DIA43	Brushed Long Life Motor (P43)	I - 10
Square 43	Strong Planetary Motor (P43-1)	I - 11
DIA43	DC Strong Planetary Geared (P43C)	I - 12
DIA43	Servo Motor Gearbox (P43C-1)	I - 13
DIA52	Servo Long Life Planet Motor (P52)	I - 14
DIA52	Strong Planet Gear Motor (P52-1)	I - 15
DIA54	Quiet But Strong Planet Gear Motor (P54)	I - 16
DIA65	Strong Planet DIA65 Gear Motor (P65)	I - 17
DIA80	DC Brushed Planetary Motor (P80)	I - 18
DIA80	Turbo DC Planetary Motor (KP80)	I - 19
DIA124	Strong Planetary Motor (P124)	I - 20

GEAR MOTOR WITH ENCODER

DIA22	DC Servo Planetary Motor (SVP22)	II - 1
DIA22	Long Tube Servo Planet (SVP22LONG)	II - 2
DIA54	DC Servo Motor (SV54)	II - 3

BLDC PLANETARY GEAR MOTOR

DIA34	Brushless DIA34 Motor (P32BL34)	III - 1
DIA37	L34/43 BLDC Motors (P35-BL35)	III - 2
DIA42	15W BLDC DIA42 Geared (P35-BL42)	III - 3
DIA43	BLDC Planet Motor (P43-BL42)	III - 4
DIA43	30W DIA43 BLDC Planet (P43C-BL43Q)	III - 5
DIA60	BLDC Planet Geared (P52-BL60)	III - 6



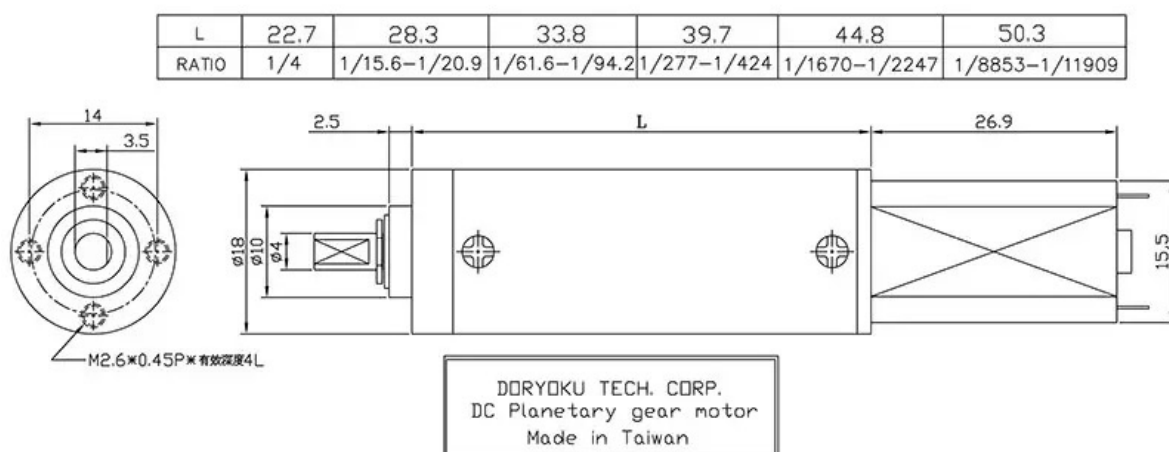
FEATURES

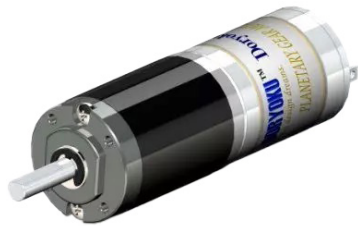
- » The planetary gearbox can be made by plastic or by metal, and depending by gear ratio, can have one, two, three or four stages.
- » The product line of planetary gearbox includes motor sizes ranging from 18mm to 80mm, gear ratios ranging from 4:1 to 11909:1.

SPECIFICATION

Reduction Ratio	1/4 - 1/11952
Size	18.0 x 61.0 - 88.0mm, 4mm Shaft Diameter
1 Stage	1/4 , 1/5.3
2 Stage	1/16 , 1/21
3 Stage	1/62 , 1/70 , 1/80 , 1/94
4 Stage	1/243 , 1/277 , 1/316 , 1/360 , 1/424 , 1/590
5 Stage	1/958 , 1/1246 , 1/1420 , 1/1909 , 1/2252
6 Stage	1/3783 , 1/5604 , 1/7284 , 1/9196 , 1/11952
Voltage Range	6.0 - 28.0V
Output Speed	0.3 - 2500 rpm
Remarks	<ul style="list-style-type: none"> • Metal or Plastic Gear for Option. • No brakes to fit to P18 planetary gears combination. • No Optical sensors to fit to P18 planetary gears combination. • Performance Curves of Torque, Current, Speed will be attached as sample request.

DIMENSIONS





FEATURES

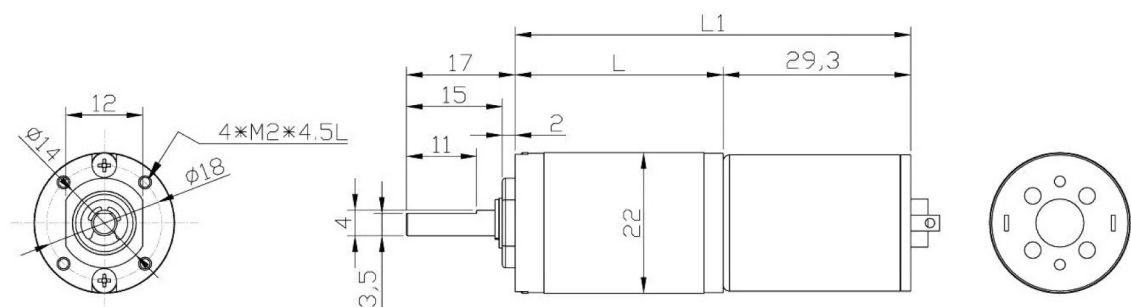
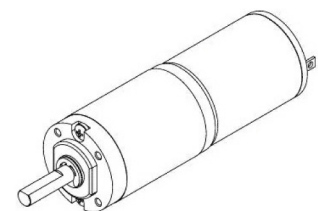
- » The planetary gearbox can be made by plastic or by metal, and depending by gear ratio, can have one, two, three or four stages.
- » The product line includes motor sizes ranging from 18mm to 80mm, gear ratios ranging from 4:1 to 424:1.

SPECIFICATION

Reduction Ratio	1/4 - 1/424
Size	22.0 x 45.0 - 61.4mm, 4mm Shaft Diameter
1 Stage	1/4
2 Stage	1/16 , 1/18 , 1/21
3 Stage	1/62 , 1/70 , 1/80 , 1/94
4 Stage	1/243 , 1/277 , 1/316 , 1/360 , 1/424
Voltage Range	6.0 - 28.0V
Output Speed	3 - 3000 rpm
Remarks	<ul style="list-style-type: none"> • Metal Gear & plastic Gear option. • Faulhaber Maxon Flange option. • No brakes to fit to P22 planetary gears combination • No Optical sensors to fit to P22 planetary gears combination • Performance Curves of Torque, Current, Speed will be attached as sample request.

DIMENSIONS

1 stage : 1/4
 2 stages : 1/16 , 1/18 , 1/21
 3 stages : 1/62 , 1/70 , 1/80 , 1/94
 4 stages : 1/243 , 1/277 , 1/316 , 1/360 , 1/424





FEATURES

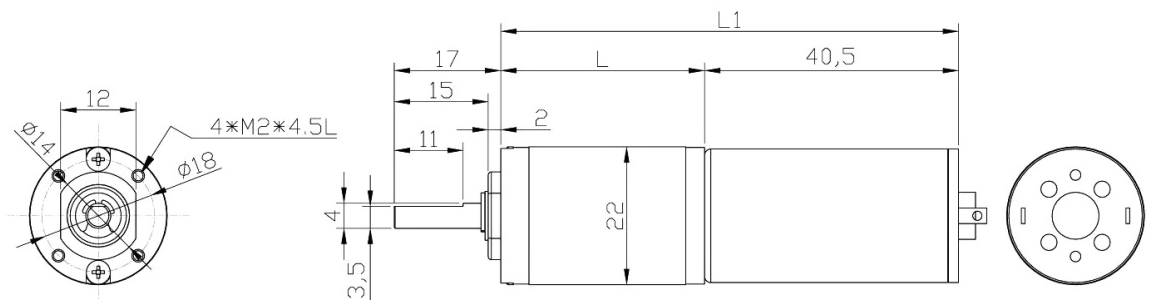
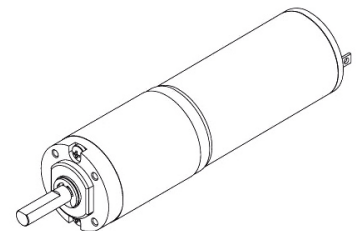
- » The planetary gearbox can be made by plastic or by metal, and depending by gear ratio, can have one, two, three or four stages.
- » The product line includes motor sizes ranging from 18mm to 80mm, gear ratios ranging from 4:1 to 424:1.

SPECIFICATION

Reduction Ratio	1/4 - 1/424
Size	22 x 58 - 74mm, 4mm Shaft Diameter
1 Stage	1/4
2 Stage	1/16 , 1/18 , 1/21
3 Stage	1/62 , 1/70 , 1/80 , 1/94
4 Stage	1/243 , 1/277 , 1/316 , 1/360 , 1/424
Voltage Range	6.0 - 28.0V
Output Speed	3 - 3000 rpm
Remarks	<ul style="list-style-type: none"> • Metal Gear & plastic Gear option. • Faulhaber Maxon Flange option. • No brakes to fit to P22 planetary gears combination • No Optical sensors to fit to P22 planetary gears combination • Performance Curves of Torque, Current, Speed will be attached as sample request.

DIMENSIONS

1 stage : 1/4
 2 stages : 1/16 , 1/18 , 1/21
 3 stages : 1/62 , 1/70 , 1/80 , 1/94
 4 stages : 1/243 , 1/277 , 1/316 , 1/360 , 1/424





FEATURES

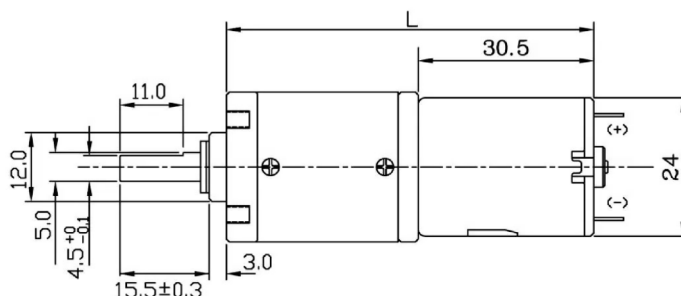
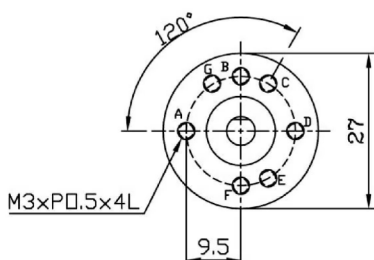
- » The planetary gearbox can be made by plastic or by metal, and depending by gear ratio, can have one, two, three or four stages.
- » The product line includes motor sizes ranging from 18mm to 80mm, gear ratios ranging from 4:1 to 410:1.

SPECIFICATION

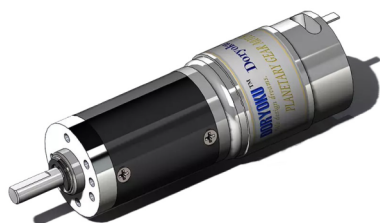
Reduction Ratio	1/4 - 1/410
Size	27.5 x 64.1 - 84.7mm, 5mm Shaft Diameter
1 Stage	1/4 , 1/4.5 , 1/5.7
2 Stage	1/16 , 1/22.7 , 1/25.5 , 1/32.1
3 Stage	1/64 , 1/81 , 1/102 , 1/128 , 1/182
4 Stage	1/256 , 1/365 , 1/410 , 1/459 , 1/516 , 1/577 , 1/819 , 1/1031
Voltage Range	6.0 - 28.0V
Output Speed	5 - 3000 rpm
Remarks	<ul style="list-style-type: none"> • Metal Gear & plastic Gear option. • Faulhaber Maxon Portescap Flange option • No brakes to fit to P26 planetary gears combination. • No Optical sensors to fit to P26 planetary gears combination. • Magnetic sensors fit for a combination. • Performance Curves of Torque, Current, Speed will be attached as sample request.

DIMENSIONS

hole	ratio	L
AD	1/4.5	57.1
ACE	1/20.25	63.9
ABDF	1/91	70.9
	1/410	77.5



DORYOKU TECH. CORP.
DC Planetary gear motor
Made in Taiwan



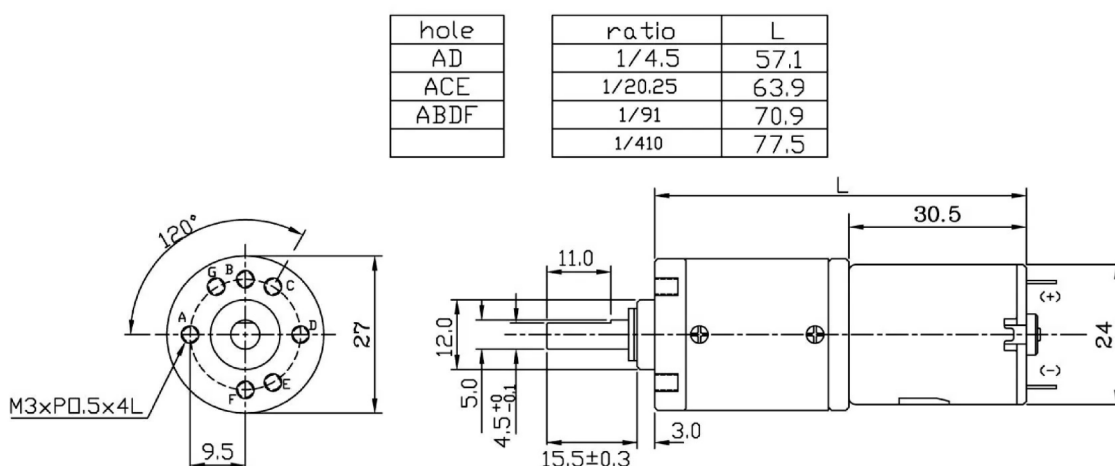
FEATURES

- » The planetary gearbox can be made by plastic or by metal, and depending by gear ratio, can have one, two, three or four stages.
- » The product line includes motor sizes ranging from 18mm to 80mm, gear ratios ranging from 4:1 to 410:1.

SPECIFICATION

Reduction Ratio	1/4 - 1/410
Size	37.5 x 74.7 - 98.1mm, 5mm Shaft Diameter
1 Stage	1/4, 1/4.5, 1/5.7
2 Stage	1/16 , 1/22.7 , 1/25.5 , 1/32.1
3 Stage	1/64 ,1/81 , 1/102 , 1/128 , 1/182
4 Stage	1/256, 1/365, 1/410 , 1/459, 1/516 , 1/577 , 1/819, 1/1031
Voltage Range	6.0 - 28.0V
Output Speed	10 - 3000 rpm
Remarks	<ul style="list-style-type: none"> • Metal Gear & plastic Gear option. • Faulhaber Maxon Portescap Flange option • No brakes to fit to P26 planetary gears combination. • No Optical sensors to fit to P26 planetary gears combination. • Performance Curves of Torque, Current, Speed will be attached as sample request.

DIMENSIONS



DORYOKU TECH. CORP.
DC Planetary gear motor
Made in Taiwan



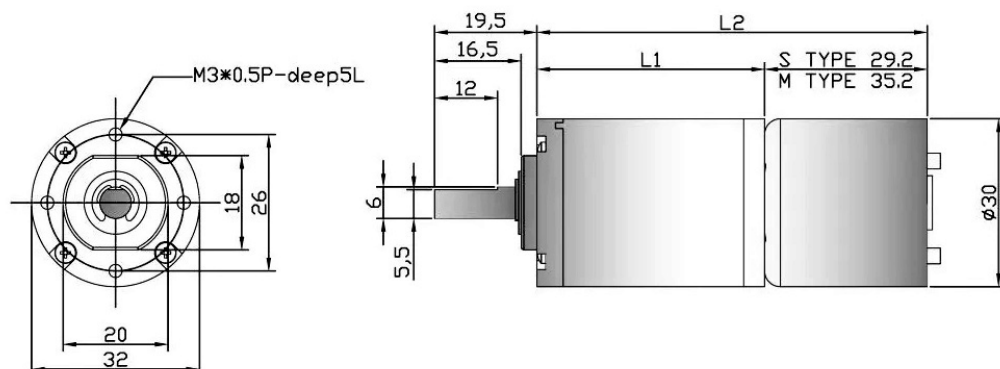
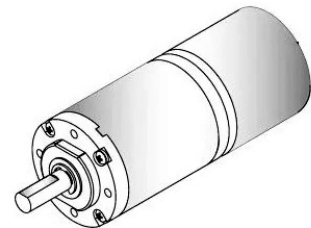
FEATURES

- » The planetary gearbox can be made by plastic or by metal, and depending by gear ratio, can have one, two, three or four stages.
- » Less noise, lower temperature increasing, small vibration, stable speed, high efficiency and high starting torque that makes it running a good performance.

SPECIFICATION

Reduction Ratio	1/3 - 1/516
Size	32 x 52 - 75mm, 6mm Shaft Diameter
1 Stage	1/4, 1/4.5, 1/5.7
2 Stage	1/16 , 1/22.7 , 1/25.5 , 1/32.1
3 Stage	1/64 ,1/81 , 1/102 , 1/128 , 1/182
4 Stage	1/256, 1/365, 1/410 , 1/459, 1/516 , 1/577 , 1/819, 1/1031
Voltage Range	6.0 - 28.0V
Output Speed	5 - 4000 rpm
Remarks	<ul style="list-style-type: none"> • Metal or Plastic Gear Option. • Faulhaber OR Maxon OR Portescap Flange option • No brakes to fit to P32 planetary gears combination. • No Optical sensors to fit to P32 planetary gears combination. • Performance Curves of Torque, Current, Speed will be attached as sample request.

DIMENSIONS





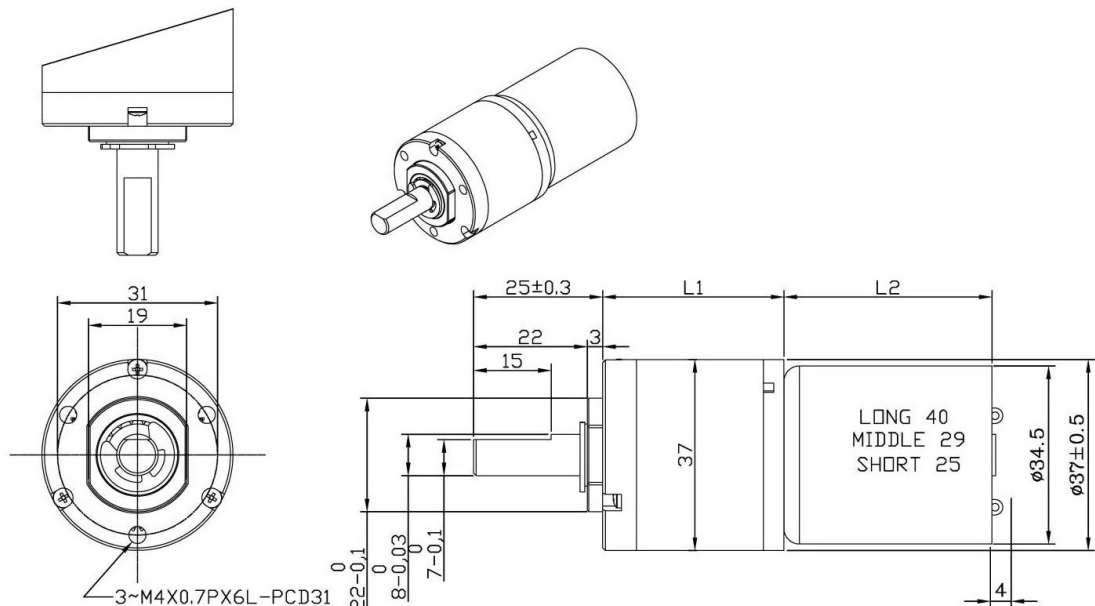
FEATURES

- » Double bearing desing of P35 series make the type long life. It can be made by plastic or by metal, and depending by gear ratio, can have one, two, three or four stages.
- » The product line includes motor sizes ranging from 18mm to 80mm, gear ratios ranging from 3:1 to 931.5:1.

SPECIFICATION

Reduction Ratio	1/3 - 1/931.5
Size	37.5 x 74.7 - 98.1mm, 5mm Shaft Diameter
1 Stage	1/3.2
2 Stage	1/12.8 , 1/17.2 , 1/21.4
3 Stage	1/50.5 , 1/67.9 , 1/84.4 , 1/91.3 , 1/113.5 , 1/141.1
4 Stage	1/199.3 , 1/268.0 , 1/360.3 , 1/484.5 , 1/602.4 , 1/749.1 , 1/931.5
Voltage Range	6.0 - 28.0V
Output Speed	10 - 3000 rpm
Remarks	<ul style="list-style-type: none"> • Metal or Plastic Gear Option. • Faulhaber Maxon Portescap Flange option • Performance Curves of Torque, Current, Speed will be attached as sample request.

DIMENTIONS





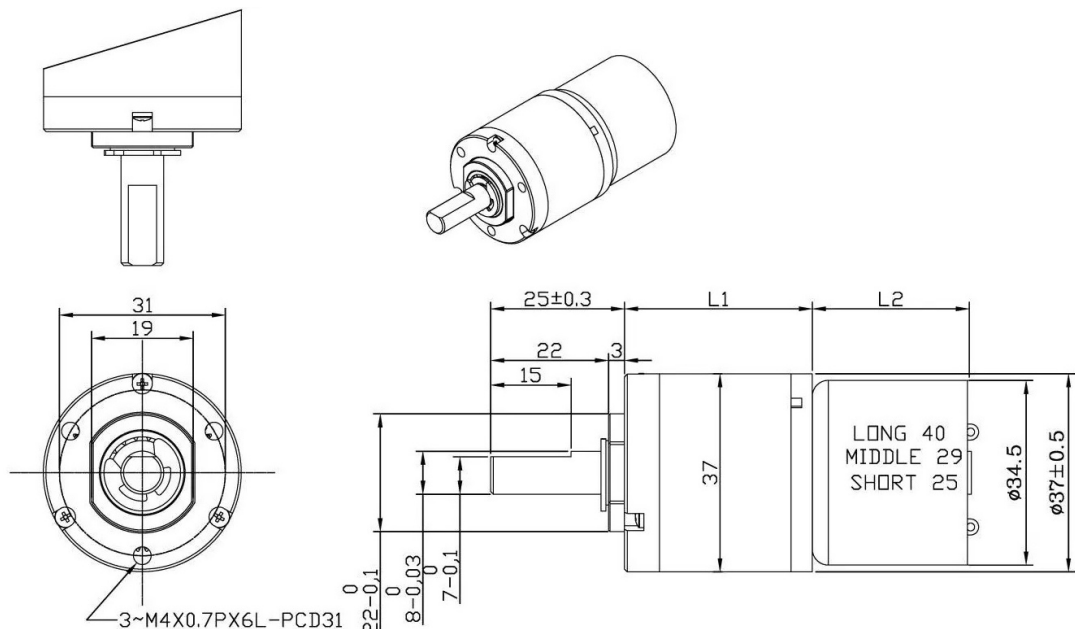
FEATURES

- » Double bearing desing of P35 series make the type long life.
It can be made by plastic or by metal, and depending by gear ratio, can have one, two, three or four stages.
- » The product line includes motor sizes ranging from 18mm to 80mm, gear ratios ranging from 3:1 to 931.5:1.

SPECIFICATION

Reduction Ratio	1/3 - 1/931.5
Size	37.5 x 74.7 - 98.1mm, 8mm Shaft Diameter
1 Stage	1/3.2
2 Stage	1/12.8 , 1/17.2 , 1/21.4
3 Stage	1/50.5 , 1/67.9 , 1/84.4 , 1/91.3 , 1/113.5 , 1/141.1
4 Stage	1/199.3 , 1/268.0 , 1/360.3 , 1/484.5 , 1/602.4 , 1/749.1 , 1/931.5
Voltage Range	6.0 - 28.0V
Output Speed	10 - 3000 rpm
Remarks	<ul style="list-style-type: none"> • Metal or Plastic Gear Option. • Faulhaber Maxon Portescap Flange option • Optical or Magnetic sensors fit for a combination. • Performance Curves of Torque, Current, Speed will be attached as sample request.

DIMENTIONS





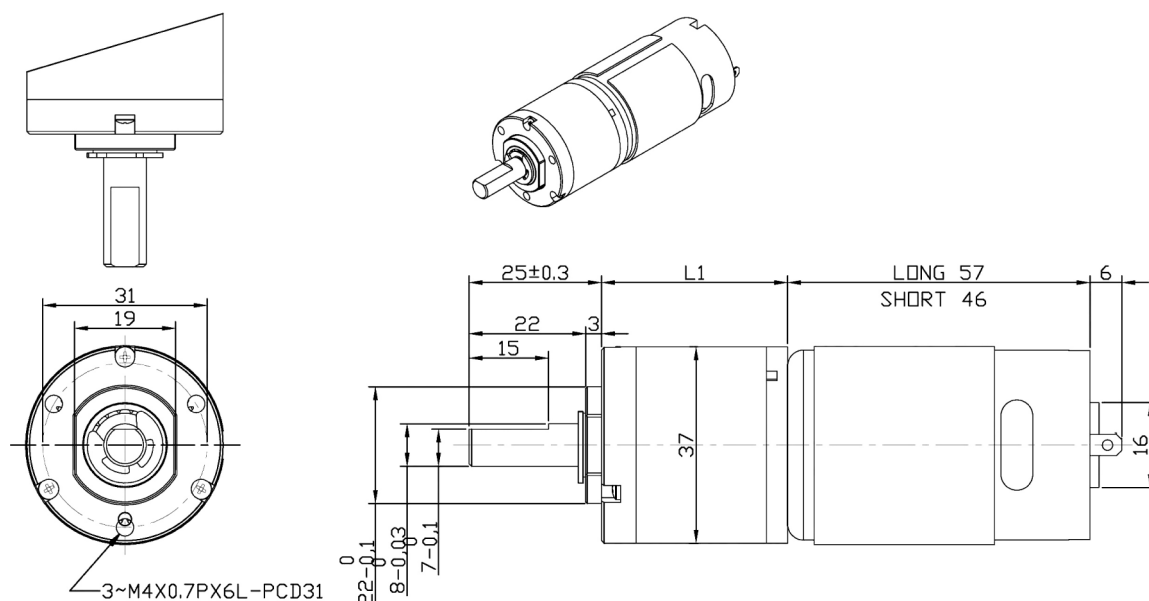
FEATURES

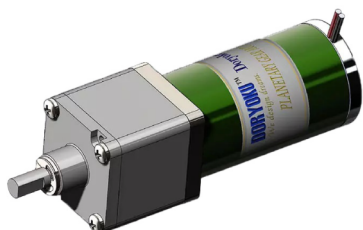
- » Double bearing desing of P35 series make the type long life.
It can be made by plastic or by metal, and depending by gear ratio, can have one, two, three or four stages.
- » The product line includes motor sizes ranging from 18mm to 80mm, gear ratios ranging from 3:1 to 931.5:1.

SPECIFICATION

Reduction Ratio	1/3 - 1/931.5
Size	37.5 x 74.7 - 98.1mm, 8mm Shaft Diameter
1 Stage	1/3.2
2 Stage	1/12.8 , 1/17.2 , 1/21.4
3 Stage	1/50.5 , 1/67.9 , 1/84.4 , 1/91.3 , 1/113.5 , 1/141.1
4 Stage	1/199.3 , 1/268.0 , 1/360.3 , 1/484.5 , 1/602.4 , 1/749.1 , 1/931.5
Voltage Range	6.0 - 28.0V
Output Speed	10 - 3000 rpm
Remarks	<ul style="list-style-type: none"> • Metal or Plastic Gear Option. • Faulhaber Maxon Portescap Flange option • Optical or Magnetic sensors fit for a combination. • Performance Curves of Torque, Current, Speed will be attached as sample request.

DIMENTIONS





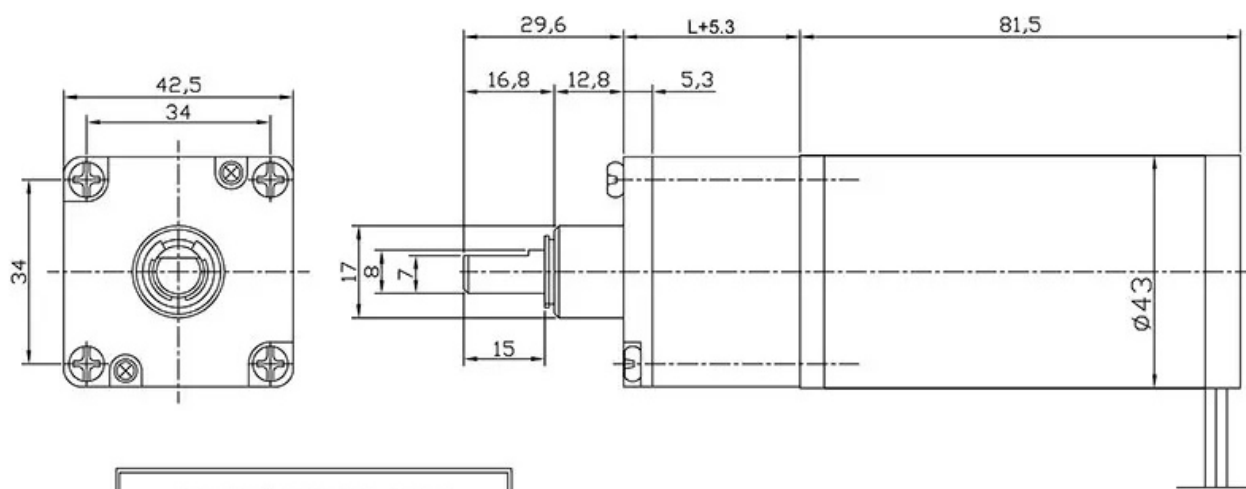
FEATURES

- » The planetary gearbox can be made by plastic or by metal, and depending by gear ratio, can have one, two, three or four stages.
- » The product line includes motor sizes ranging from 18mm to 80mm, gear ratios ranging from 4:1 to 864:1.

SPECIFICATION

Reduction Ratio	1/4 - 1/864
Size	43 x 90 - 114mm, 8mm Shaft Diameter
1 Stage	1/4
2 Stage	1/14 , 1/17 , 1/24
3 Stage	1/49 , 1/60 , 1/75 , 1/84 , 1/144
4 Stage	1/172 , 1/212 , 1/294 , 1/364 , 1/504 , 1/624 , 1/864
Voltage Range	6.0 - 28.0V
Output Speed	10 - 3000 rpm
Remarks	<ul style="list-style-type: none"> • Metal or Plastic Gear Option. • Optical or Magnetic sensors fit for a combination. • Performance Curves of Torque, Current, Speed will be attached as sample request.

DIMENSIONS



DORYOKU TECH. CORP.
DC Planetary gear motor
Made in Taiwan



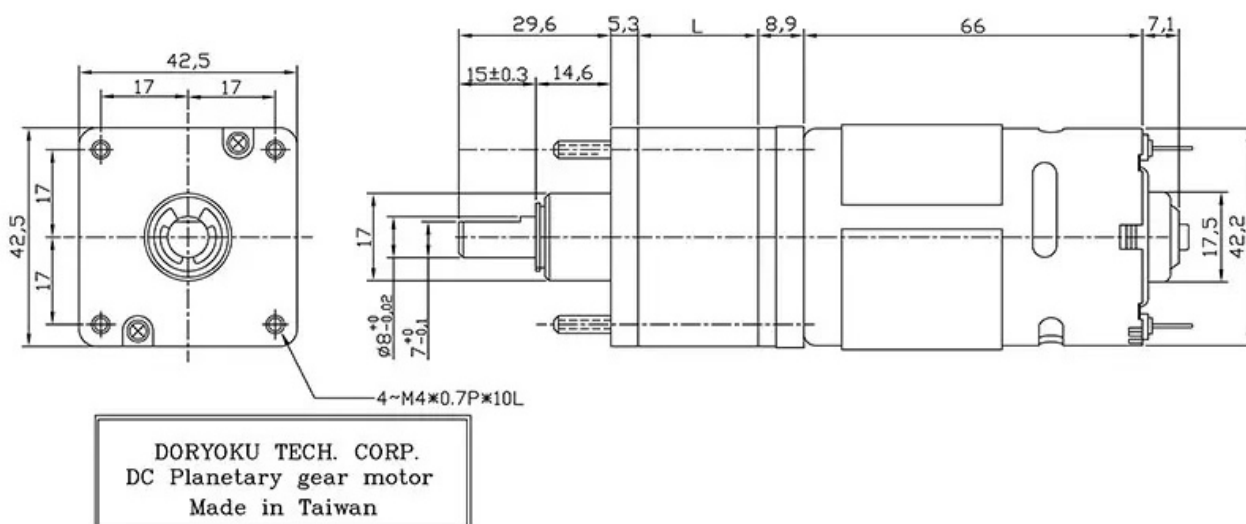
FEATURES

- » The planetary gearbox can be made by plastic or by metal, and depending by gear ratio, can have one, two, three or four stages.
- » The product line includes motor sizes ranging from 18mm to 80mm, gear ratios ranging from 4:1 to 864:1.

SPECIFICATION

Reduction Ratio	1/4 - 1/864
Size	43 x 90 - 114mm, 8mm Shaft Diameter
1 Stage	1/4
2 Stage	1/14 , 1/17 , 1/24
3 Stage	1/49 , 1/60 , 1/75 , 1/84 , 1/144
4 Stage	1/172 , 1/212 , 1/294 , 1/364 , 1/504 , 1/624 , 1/864
Voltage Range	6.0 - 28.0V
Output Speed	10 - 3000 rpm
Remarks	<ul style="list-style-type: none">• Metal or Plastic Gear Option.• Nema 17 Option.• Performance Curves of Torque, Current, Speed will be attached as sample request.

DIMENSIONS





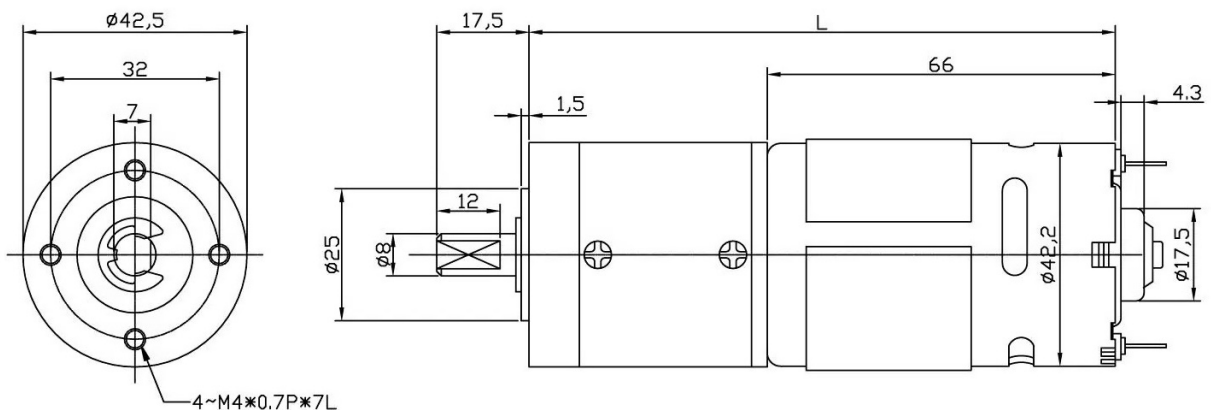
FEATURES

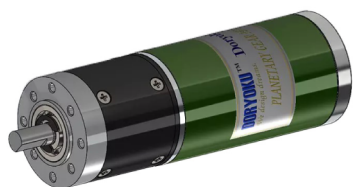
- » The planetary gearbox can be made by plastic or by metal, and depending by gear ratio, can have one, two, three or four stages.
- » The product line includes motor sizes ranging from 18mm to 80mm, gear ratios ranging from 4:1 to 864:1.

SPECIFICATION

Reduction Ratio	1/4 - 1/864
Size	43 x 90 - 114mm, 8mm Shaft Diameter
1 Stage	1/4
2 Stage	1/14 , 1/17 , 1/24
3 Stage	1/49 , 1/60 , 1/75 , 1/84 , 1/144
4 Stage	1/172 , 1/212 , 1/294 , 1/364 , 1/504 , 1/624 , 1/864
Voltage Range	12V , 24V , 36V
Output Speed	10 - 3000 rpm
Remarks	<ul style="list-style-type: none"> • Metal or Plastic Gear Option. • Nema 17 Option. • Optical or Magnetic sensors fit for a combination. • Performance Curves of Torque, Current, Speed will be attached as sample request.

DIMENSIONS





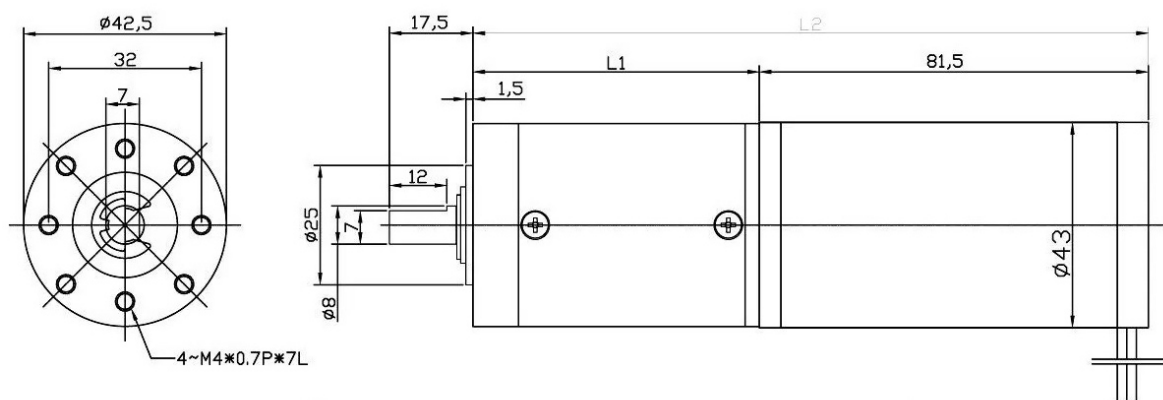
FEATURES

- » The planetary gearbox can be made by plastic or by metal, and depending by gear ratio, can have one, two, three or four stages.
- » The product line includes motor sizes ranging from 18mm to 80mm, gear ratios ranging from 4:1 to 864:1.

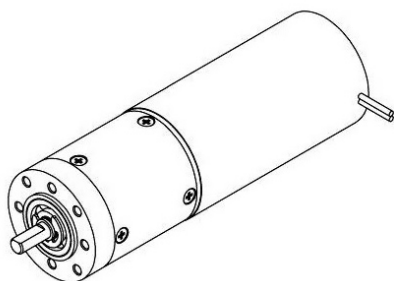
SPECIFICATION

Reduction Ratio	1/4 - 1/864
Size	43 x 90 - 114mm, 8mm Shaft Diameter
1 Stage	1/4
2 Stage	1/14 , 1/17 , 1/24
3 Stage	1/49 , 1/60 , 1/75 , 1/84 , 1/144
4 Stage	1/172 , 1/212 , 1/294 , 1/364 , 1/504 , 1/624 , 1/864
Voltage Range	6.0 - 28.0V
Output Speed	10 - 3000 rpm
Remarks	<ul style="list-style-type: none"> • Metal or Plastic Gear Option. • Nema 17 Option. • Optical or Magnetic sensors fit for a combination. • Performance Curves of Torque, Current, Speed will be attached as sample request.

DIMENSIONS



DORYOKU TECH. CORP.
DC Planetary gear motor
Made in Taiwan



DORYOKU™ DIA52 Servo Long Life Planet Motor

(P52 SERVO / RMP52 TURBO GEAR MOTOR)

We design dreams.



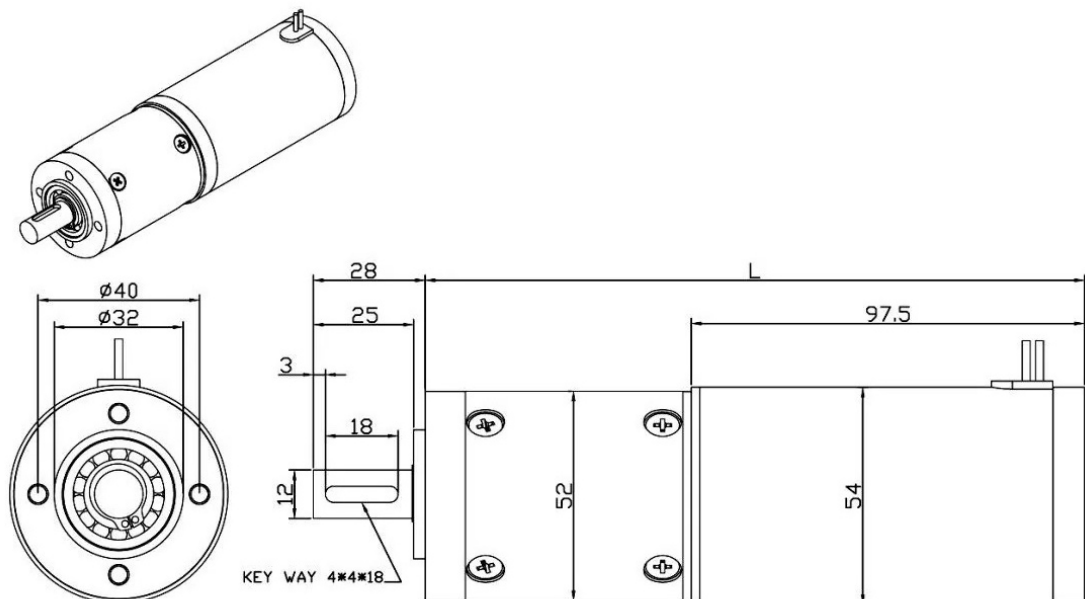
FEATURES

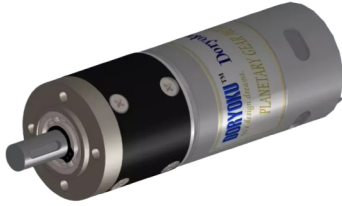
- » The planetary gearbox can be made by plastic or by metal, and depending by gear ratio, can have one, two, three or four stages.
- » The product line includes motor sizes ranging from 18mm to 80mm, gear ratios ranging from 1/4 - 1/312.
- » TURBO Type Available.

SPECIFICATION

Reduction Ratio	1/4 - 1/312
Size	52mm x 153mm~184mm
1 Stage	1/4 , 1/6.25 , 1/8
2 Stage	1/16 , 1/25 , 1/36 , 1/50
3 Stage	1/64 , 1/81 , 1/100 , 1/128 , 1/144 , 1/176 , 1/200 , 1/225 , 1/244 , 1/312
Voltage Range	12V , 24V , 36V
Output Speed	10 - 3000 rpm
Remarks	<ul style="list-style-type: none"> • Metal or Plastic Gear Option. • Nema 17 Option • Performance Curves of Torque, Current, Speed will be attached as sample request.

DIMENSIONS





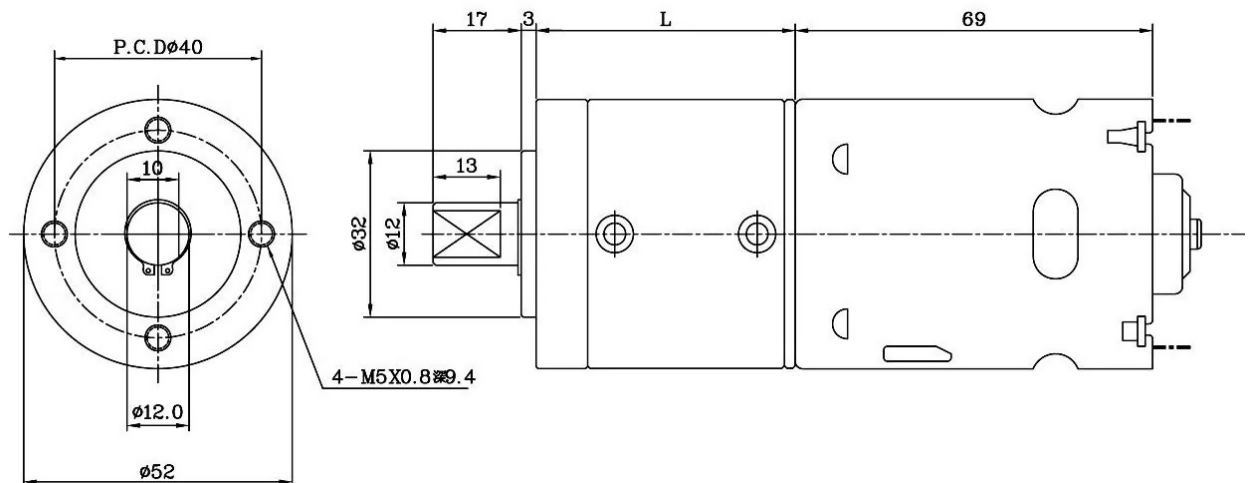
FEATURES

- » The planetary gearbox can be made by plastic or by metal, and depending by gear ratio, can have one, two, three or four stages.
- » The product line includes motor sizes ranging from 18mm to 80mm, gear ratios ranging from 1/4 - 1/244.

SPECIFICATION

Reduction Ratio	1/4 - 1/244
Size	52mm x 135mm~166mm
1 Stage	1/4 , 1/6.25
2 Stage	1/16 , 1/25 , 1/39
3 Stage	1/64 , 1/81 , 1/100 , 1/127 , 1/176 , 1/244
Voltage Range	12V , 24V , 36V
Output Speed	10 - 3000 rpm
Remarks	<ul style="list-style-type: none"> • Metal Gear. • Nema 34 Option. • Optical or Magnetic sensors fit for a combination. • Performance Curves of Torque, Current, Speed will be attached as sample request.

DIMENSIONS





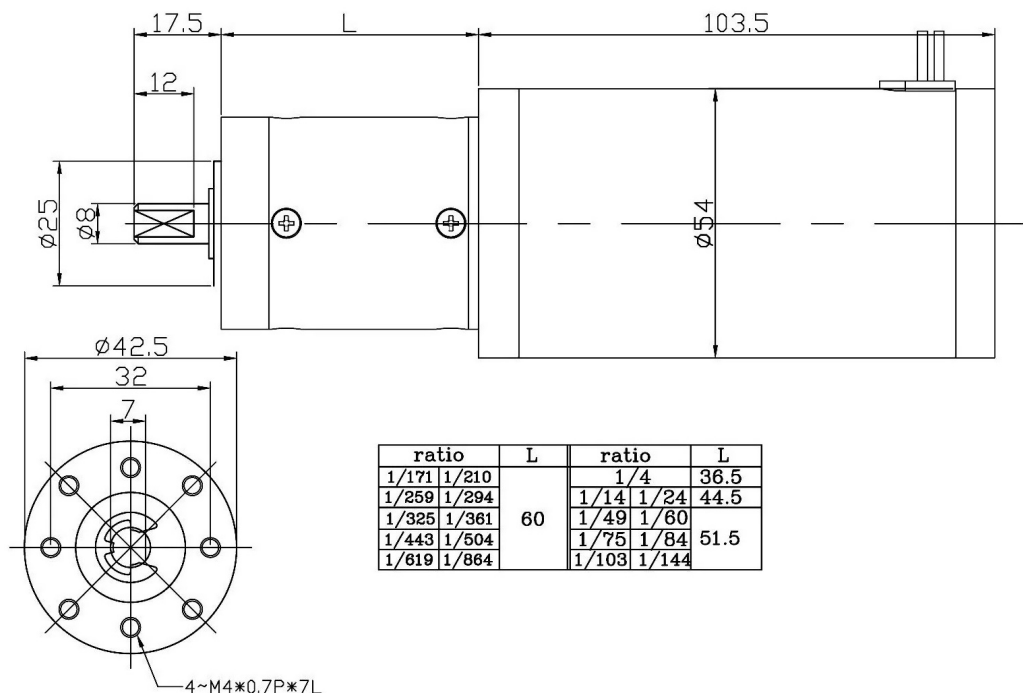
FEATURES

- » The planetary gearbox can be made by plastic or by metal, and depending by gear ratio, can have one, two, three or four stages.
- » The product line includes motor sizes ranging from 18mm to 80mm, gear ratios ranging from 4:1 to 864:1.

SPECIFICATION

Reduction Ratio	1/4 - 1/864
Size	54 x 140 - 164mm, 8mm Shaft Diameter
1 Stage	1/4
2 Stage	1/14 , 1/17 , 1/24
3 Stage	1/49 , 1/60 , 1/75 , 1/84 , 1/144
4 Stage	1/172 , 1/212 , 1/294 , 1/364 , 1/504 , 1/624 , 1/864
Voltage Range	12V , 24V , 36V
Output Speed	10 - 3000 rpm
Remarks	<ul style="list-style-type: none"> • Metal or Plastic Gear Option. • Nema 17 Option. • Optical or Magnetic sensors fit for a combination. • Performance Curves of Torque, Current, Speed will be attached as sample request.

DIMENSIONS





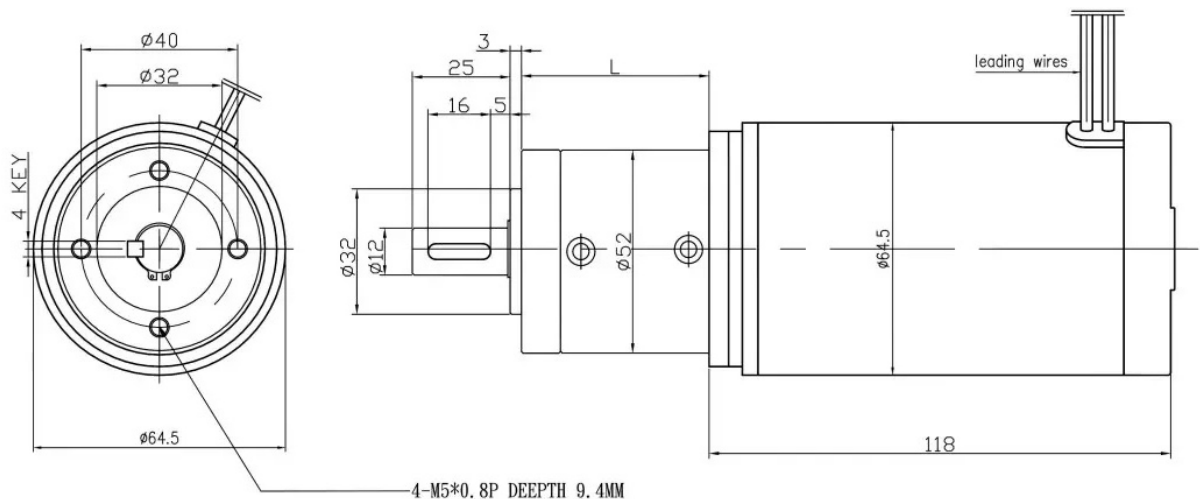
FEATURES

- » The planetary gearbox can be made by plastic or by metal, and depending by gear ratio, can have one, two, three or four stages.
- » The product line includes motor sizes ranging from 65mm, gear ratios ranging from 1/4 - 1/312.

SPECIFICATION

Reduction Ratio	1/4 - 1/244
1 Stage	1/4 , 1/6.25 , 1/8
2 Stage	1/16 , 1/25 , 1/36 , 1/50
3 Stage	1/64 , 1/81 , 1/100 , 1/128 , 1/144 , 1/176 , 1/200 , 1/225 , 1/244 , 1/312
Voltage Range	12V , 24V , 36V
Output Speed	10 - 3000 rpm
Remarks	<ul style="list-style-type: none"> • Metal Gear. • Nema 23 Option. • Optical or Magnetic sensors fit for a combination. • Performance Curves of Torque, Current, Speed will be attached as sample request.

DIMENSIONS





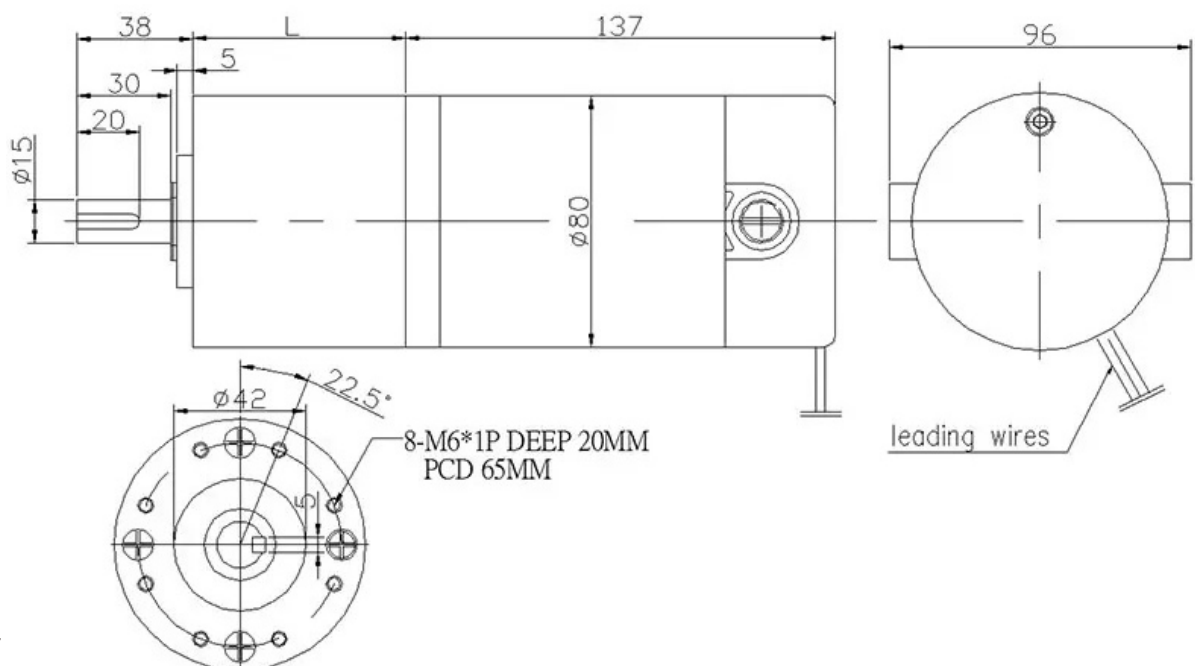
FEATURES

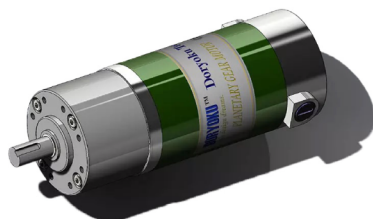
- » The planetary gearbox can be made by plastic or by metal, and depending by gear ratio, can have one, two, three or four stages.
- » The product line includes motor sizes ranging from 80mm, gear ratios ranging from 1/4 - 1/244.

SPECIFICATION

Reduction Ratio	1/4 - 1/244
1 Stage	1/4 , 1/6.25
2 Stage	1/16 , 1/25 , 1/39
3 Stage	1/64 , 1/81 , 1/100 , 1/127 , 1/176 , 1/244
Voltage Range	12V , 24V , 36V
Output Speed	5 - 1000 rpm
Remarks	<ul style="list-style-type: none"> • Metal Gear. • Optical or Magnetic sensors fit for a combination. • Performance Curves of Torque, Current, Speed will be attached as sample request.

DIMENSIONS





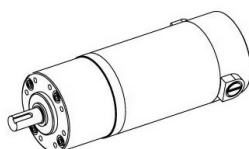
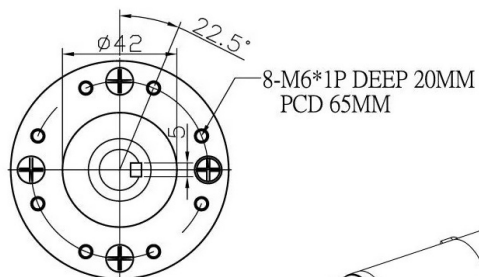
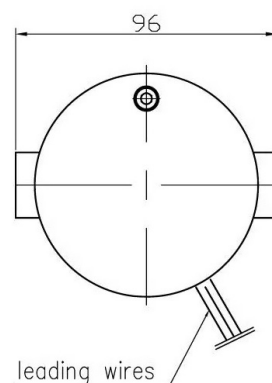
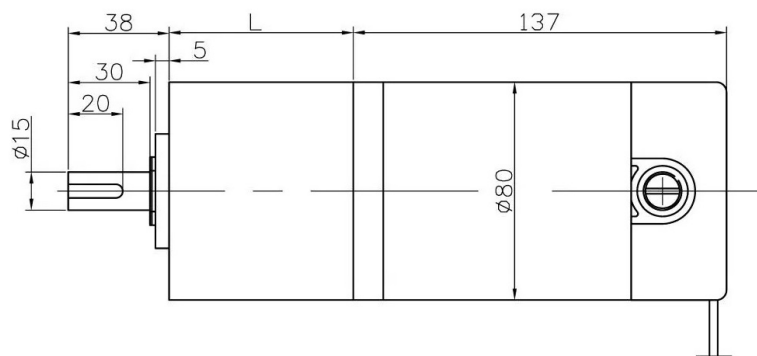
FEATURES

- » The planetary gearbox can be made by plastic or by metal, and depending by gear ratio, can have one, two, three or four stages.
- » The product line includes motor sizes ranging from 80mm, gear ratios ranging from 1/4 - 1/625.

SPECIFICATION

Reduction Ratio	1/4 - 1/244
1 Stage	1/4 , 1/5
2 Stage	1/16 , 1/20 , 1/25
3 Stage	1/64 , 1/80 , 1/100 , 1/125 (68L)
4 Stage	1/256 , 1/320 , 1/400 , 1/500 , 1/625 (82L)
Voltage Range	12V , 24V , 36V
Output Speed	5 - 1000 rpm
Remarks	<ul style="list-style-type: none"> • Metal Gear. • Optical or Magnetic sensors fit for a combination. • Performance Curves of Torque, Current, Speed will be attached as sample request.

DIMENSIONS





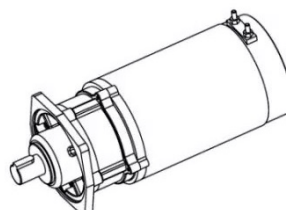
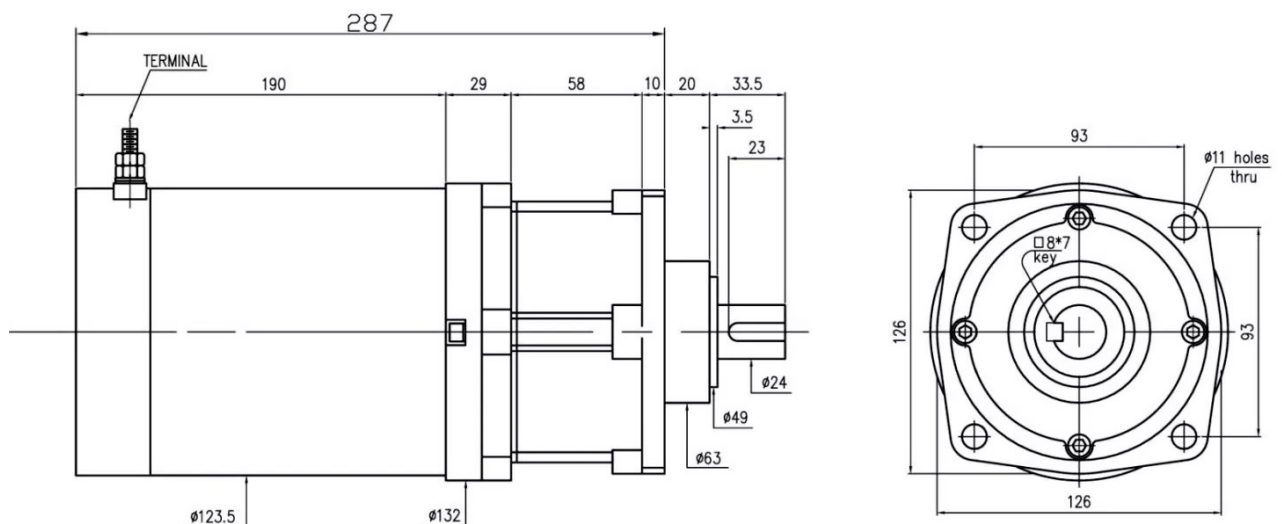
FEATURES

- » The material of this type P124 is made by very strong metal to make it bearing high torque.
- » The gear ratios is 1/7.75 , 1/10.

SPECIFICATION

Reduction Ratio	1/7.5 , 1/10
Voltage Range	12V , 24V
Output Speed	100 - 550 rpm
Remarks	<ul style="list-style-type: none"> • Metal Gear. • Optical or Magnetic sensors fit for a combination. • Performance Curves of Torque, Current, Speed will be attached as sample request.

DIMENSIONS





FEATURES

- » Quiet and long life special design Brushed DC Motor with Dia 22mm Planetary Gearbox makes Continuous torque stable.
- » Gear ratios ranging from 4:1 to 424:1.
- Many data sheet in our database, Welcome to request.

SPECIFICATION

- MAGNETIC Encoder
- DC servo Planetary Motor
- DIA 26 x 56 - 88mm.
- Metal or Plastic Gear Option.
- Faulhaber Maxon Portescap Flange option.
- Performance Curves of Torque, Current, Speed will be attached as sample request.

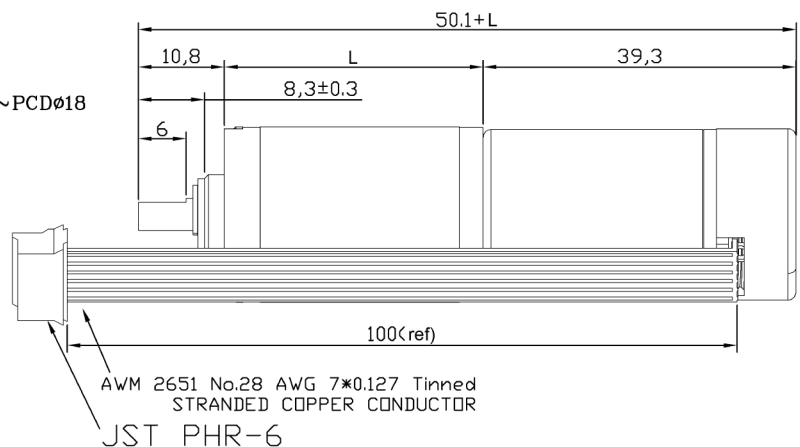
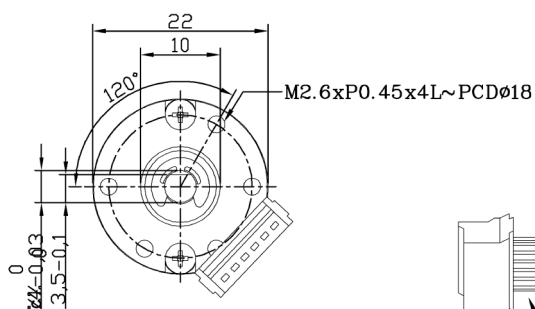
SPECIFICATION OF ENCODER

Power Supply	DC 5V
Power Consumption	< 80mA
Output Mode	Line Driver
Pulse Number	3PPR

SPECIFICATION OF MOTOR

Output Power	5W to 8W
Volt	12V , 24V
No Load Speed	2000 - 8000 rpm

DIMENSIONS





FEATURES

- » Our product line includes planetary, spur Gearbox, combined with brushed, BLDC, stepping, servo motor.
- » Size range from 18mm to 80mm, gear ratios ranging from 4:1 to 11909:1. And continuous torque of up to 4,166 oz-in.

SPECIFICATION

- MAGNETIC Encoder
- DC servo Planetary Motor
- DIA 26 x 56 - 88mm.
- Metal or Plastic Gear Option.
- Faulhaber Maxon Portescap Flange option.
- Performance Curves of Torque, Current, Speed will be attached as sample request.

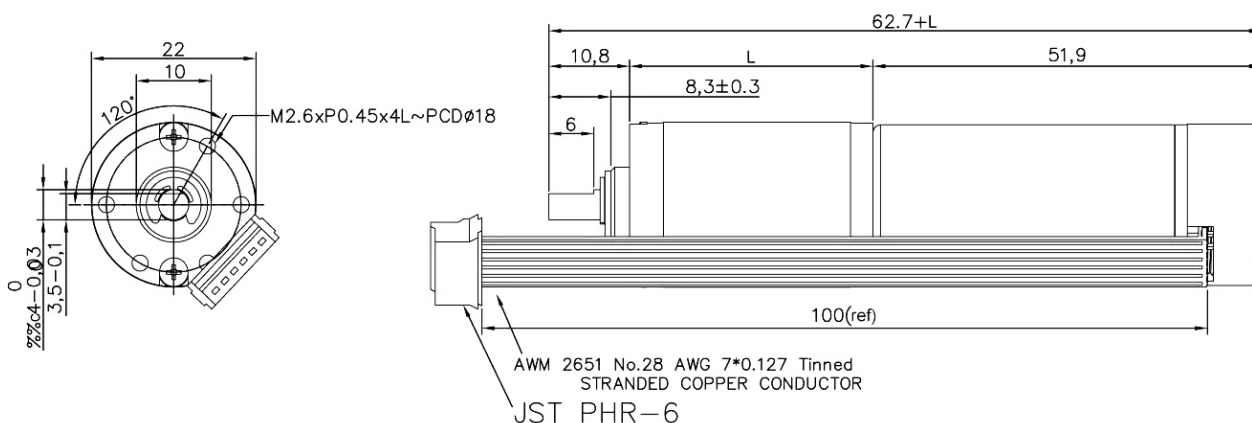
SPECIFICATION OF ENCODER

Power Supply	DC 5V
Power Consumption	< 80mA
Output Mode	Line Driver
Pulse Number	3PPR

SPECIFICATION OF MOTOR

Output Power	5W to 8W
Volt	12V , 24V
No Load Speed	2000 - 8000 rpm

DIMENSIONS





FEATURES

- » Professional range of servo motors from DORYOKU is the best choice for design equipment. The voltage, speed could customize for your application.
- » This wide range of DC servo motors from 10W to 1000W is easy to let customers design the equipment.

SPECIFICATION

- Hall Sensor Encoder 2 channel 500ppr.
- DC servo motor.
- DIA 54 x 126mm.

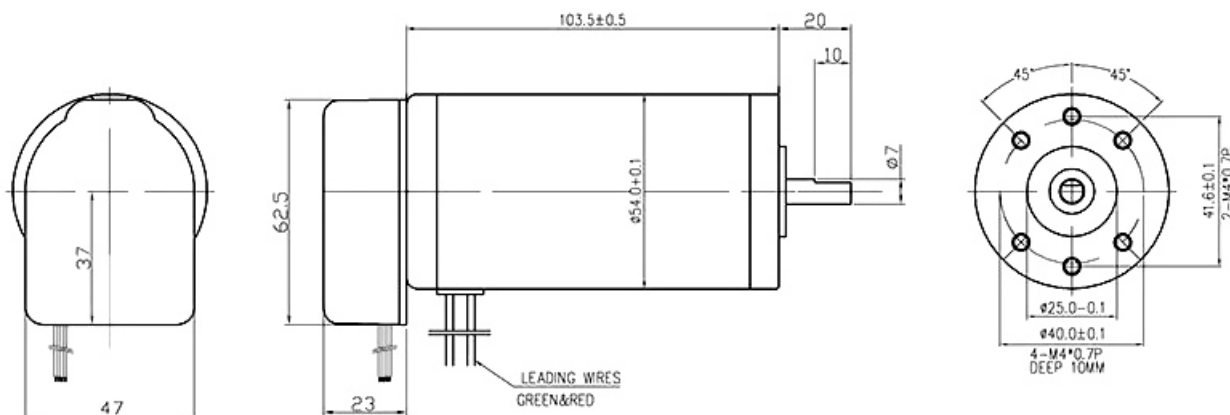
SPECIFICATION OF ENCODER

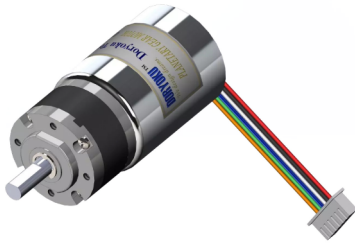
Power Supply	DC 5V
Power Consumption	< 80mA
Output Mode	Line Driver
Pulse Number	500 Pulse / 2 Channel
Frequency Response	25 KHz Max.

SPECIFICATION OF MOTOR

Output Power	60W
Volt	24V
Rated Current	4.18 A
Rated Torque	2.69 KG-CM
Stall Torque	12 KG-CM
No Load Speed	3400 RPM

DIMENSIONS





FEATURES

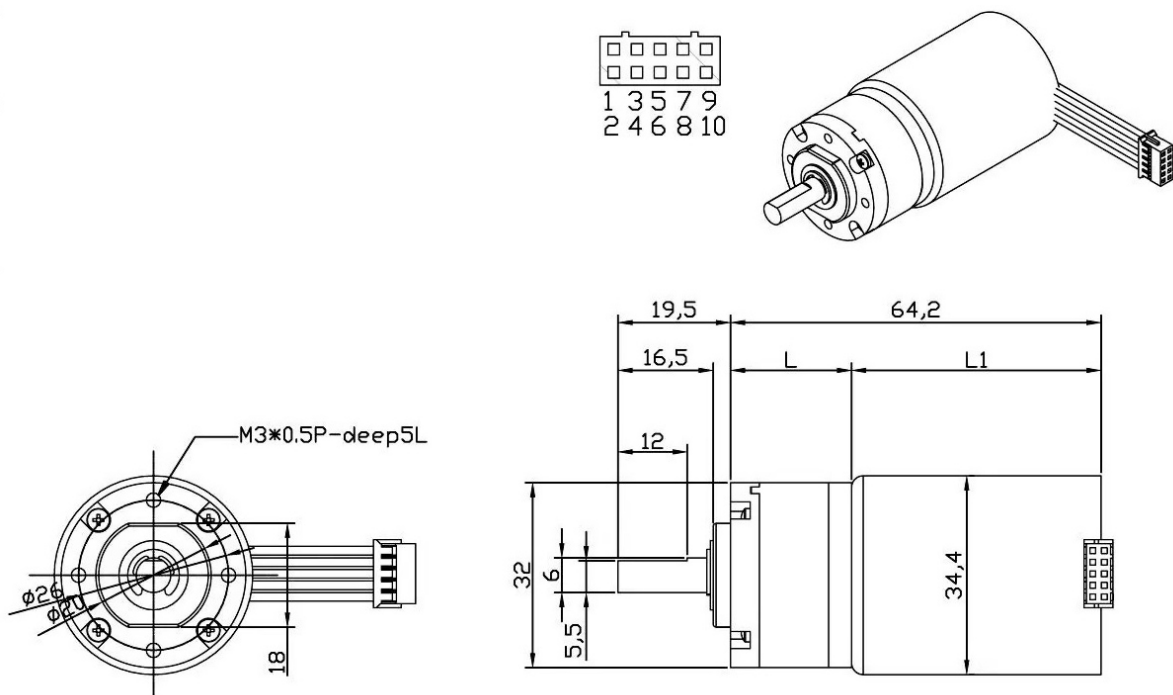
- » DC Servo low noise geared Motor.
- » Gear ratios ranging from 4.5:1 to 516:1.
- And continuous torque of up to 8 Kg-cm.

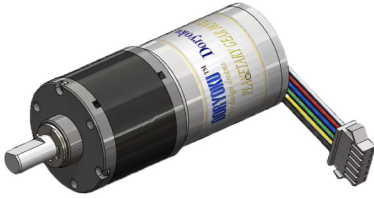
SPECIFICATION

- DIA 32 x 57mm.
- Strong Gear Material Option.
- Performance Curves of Torque, Current, Speed will be attached as sample request.

1 Stage	1/4, 1/4.5, 1/5.7
2 Stage	1/16, 1/22.7, 1/25.5, 1/32.1
3 Stage	1/64, 1/81, 1/102, 1/128, 1/182
4 Stage	1/256, 1/365, 1/410, 1/459, 1/516, 1/577, 1/819, 1/1031

DIMENSIONS





FEATURES

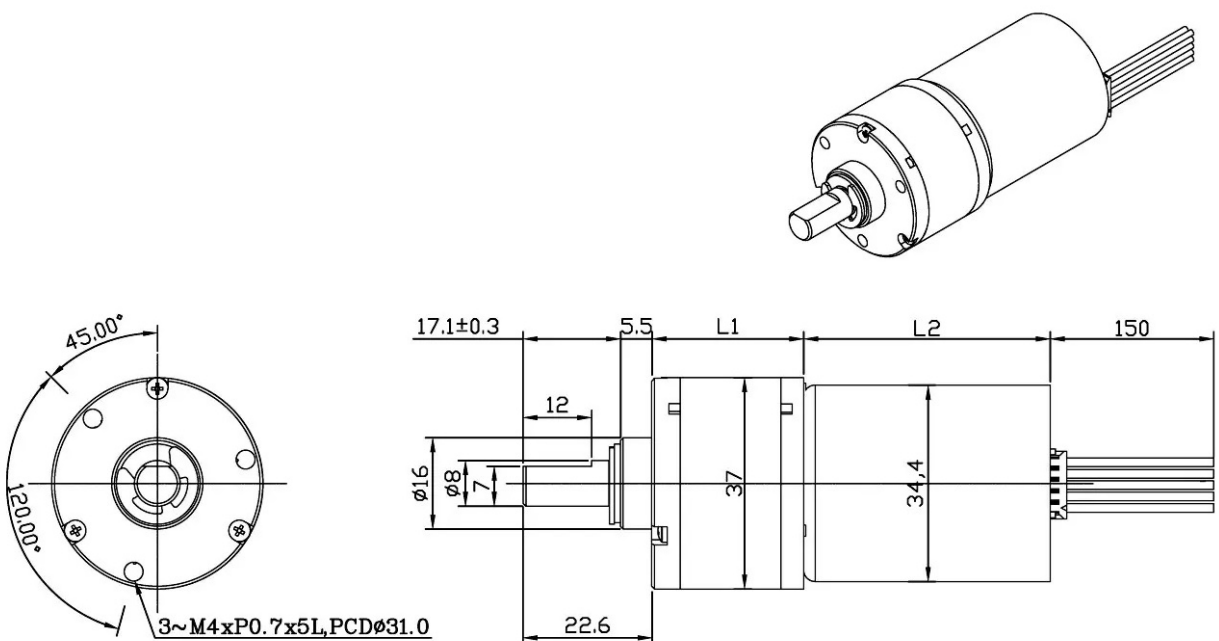
- » DC Servo brushless low noise geared Motor.
- » Gear ratios ranging from 4.5:1 to 931:1.
And continuous torque of up to 25 Kg-cm.

SPECIFICATION

- DIA 35 mm.
- RATIO 1/4 to 1/1135.
- Strong Gear Material Option.
- Performance Curves of Torque, Current, Speed will be attached as sample request.

1 Stage	1/3.2
2 Stage	1/12.8 , 1/17.2 , 1/21.4
3 Stage	1/50.5 , 1/67.9 , 1/84.4 , 1/91.3 , 1/113.5 , 1/141.1
4 Stage	1/199.3 , 1/268.0 , 1/360.3 , 1/484.5 , 1/602.4 , 1/749.1 , 1/931.5

DIMENSIONS





FEATURES

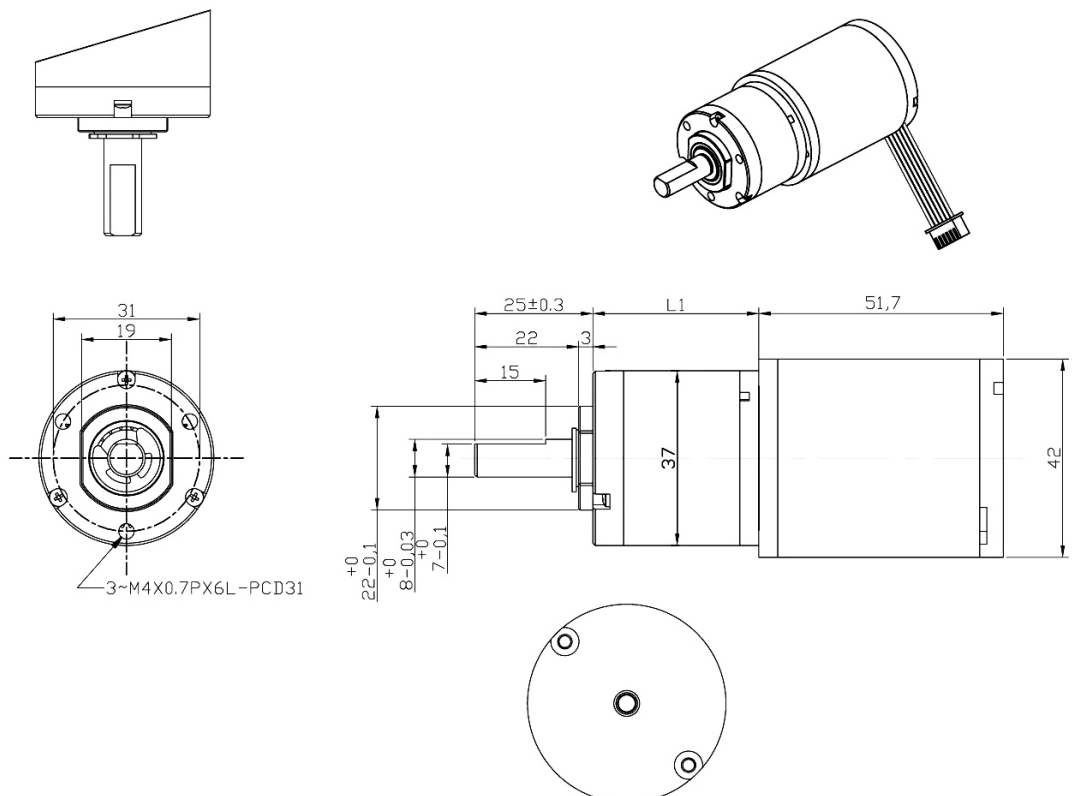
- » DC Servo brushless low noise geared Motor.
- » Gear ratios ranging from 4.5:1 to 931:1.
And continuous torque of up to 25 Kg-cm.

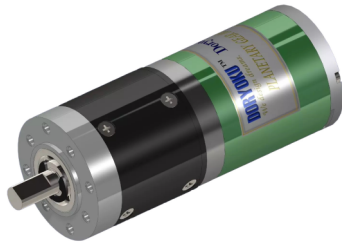
SPECIFICATION

- DIA 42 mm.
- RATIO 1/4 to 1/1135.
- Motor Rated Torque, 280 g-cm under 24V 5000rpm.
- Silent Gear Material Option.
- Performance Curves of Torque, Current, Speed will be attached as sample request.

1 Stage	1/3.2
2 Stage	1/12.8 , 1/17.2 , 1/21.4
3 Stage	1/50.5 , 1/67.9 , 1/84.4 , 1/91.3 , 1/113.5 , 1/141.1
4 Stage	1/199.3 , 1/268.0 , 1/360.3 , 1/484.5 , 1/602.4 , 1/749.1 , 1/931.5

DIMENSIONS





FEATURES

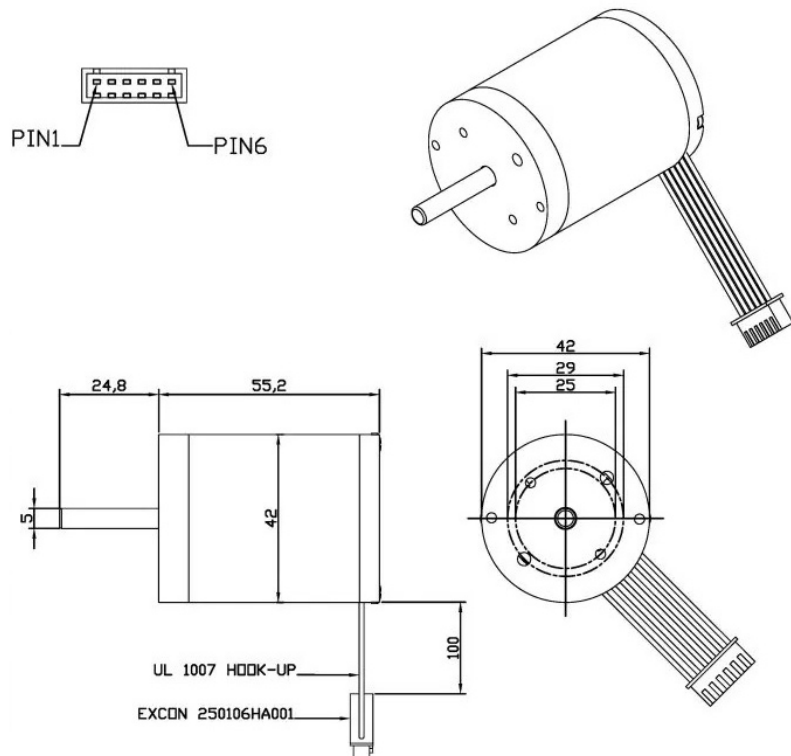
- » DC Servo brushless low noise geared Motor.
- » Gear ratios ranging from 4:1 to 864:1.
And continuous torque of up to 80 Kg-cm.

SPECIFICATION

- DIA 43 mm.
- Size : 43 x 90 - 114mm, 8mm Shaft Diameter
- Output Speed : 10 - 3000 rpm
- Reduction Ratio : 1/4 - 1/864
- Strong Gear Material Option.
- Performance Curves of Torque, Current, Speed will be attached as sample request.

1 Stage	1/4
2 Stage	1/14 , 1/17 , 1/24
3 Stage	1/49 , 1/60 , 1/75 , 1/84 , 1/144
4 Stage	1/172 , 1/212 , 1/294 , 1/364 , 1/504 , 1/624 , 1/864

DIMENSIONS





FEATURES

- » DC Servo brushless low noise geared Motor.
- » Gear ratios ranging from 4:1 to 864:1.
- And continuous torque of up to 80 Kg-cm.

SPECIFICATION

- DIA 43 mm.
- Size : 43 x 102 - 126mm, 8mm Shaft Diameter
- Output Speed : 10 - 1000 rpm
- Reduction Ratio : 1/4 - 1/864
- Strong Gear Material Option.
- Performance Curves of Torque, Current, Speed will be attached as sample request.

1 Stage	1/4
2 Stage	1/14 , 1/17 , 1/24
3 Stage	1/49 , 1/60 , 1/75 , 1/84 , 1/144
4 Stage	1/172 , 1/212 , 1/294 , 1/364 , 1/504 , 1/624 , 1/864

DIMENSIONS

